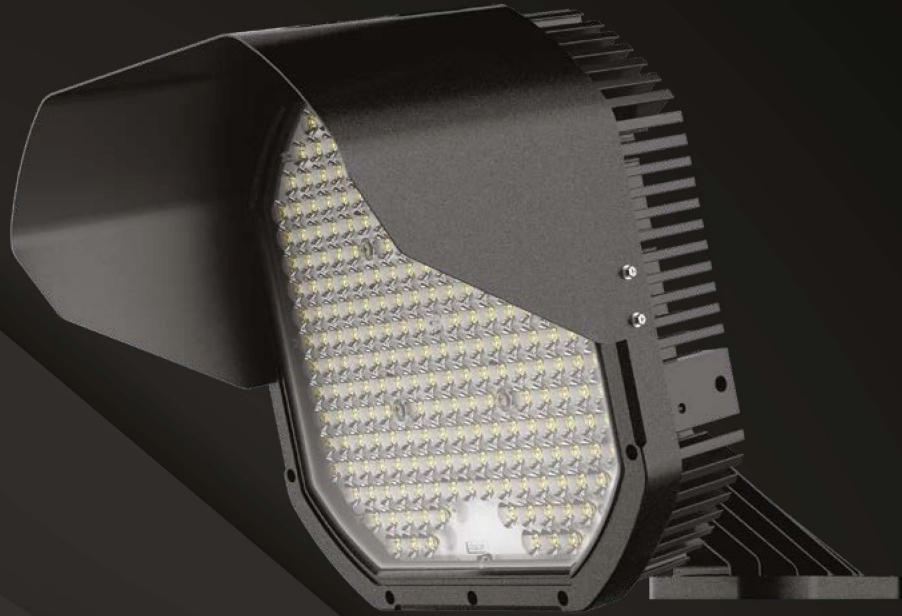


COM LITE STADIUM FLOODS



EXTERNAL LIGHTING ▶ Com Lite Stadium Floods

High powered lighting with asymmetrical beam angle suitable for large areas like football pitches, stadiums, tennis courts etc



KEY FEATURES

- 50,000hr life expectancy
- > 135lm per watt
- Built in 10kv surge protection
- Choice of beam angles
- CRI > 80
- IP66 rated
- Manufactured with quality materials and reliable driver
- PF > 0.90
- Remote gearbox for easy of wiring
- Zero maintenance

MATERIALS

- Aluminium alloy
- Diecast aluminium body and glass diffuser
- Branded LED chip
- Inventronics driver
- Tempered glass

ACCESSORIES AVAILABLE

- Asymmetric lens available for different beam angles
- Various pole mounting brackets available

ADDITIONAL INFORMATION

- 5000k supplied as standard but 4000k and 6000k available on special order
- Working temperature -30 to +50 degrees

DIMMABLE OPTIONS

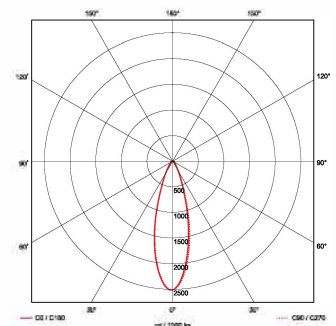
- /D for 1-10V dimmable
- /DD for DSI digital dimmable (on selected models)
- /DL for Dali and switch dimmable (on selected models)

WARRANTY

5 years

IP RATING

IP66



DFL600/5

PRODUCT CODE	DESCRIPTION	WATTAGE (W)	DIMENSIONS L x W x H (mm)	LIGHT SOURCE	NET LUMEN OUTPUT	LUMEN PER CIRCUIT WATT
DFL600/5	600W high powered stadium light 6000k	565W	406 x 404 x 432	SMD LED	79640lm	> 135

ACCESSORIES	DESCRIPTION
DFL600/VIS	Visor for DFL600
DFL600/LENS10	10 degree lens
DFL600/LENS15	15 degree lens
DFL600/LENS30	30 degree lens

